



sp≡ctro
MEP SOLUTIONS

FLOW THROUGH INNOVATION

SPECTRO is an MEP contracting entity and a dedicated subsidiary of ABSAL PAUL Contracting Company built on a legacy of over 15 years of experience.

It was established as part of a strategic initiative to expand industrial capabilities and meet the growing demands of the MEP sector within the Kingdom of Saudi Arabia. With a strong foundation in engineering excellence, SPECTRO delivers comprehensive, high-quality MEP solutions tailored to the unique requirements of complex and high-end developments.

In addition to its contracting services, SPECTRO operates a specialized HVAC factory that offers a wide portfolio of products services.

As part of ABSAL PAUL, SPECTRO is trusted to deliver high-end hospitality, commercial and mission-critical projects, where precision, coordination, and attention to detail are critical.

Our Mission

To provide innovative and sustainable MEP solutions with the agility and efficiency needed to support the ambitious pace of Saudi Vision 2030.

Our Vision

To be the preferred MEP partner in Saudi Arabia, recognized for technical excellence, quality, agility and client trust.



Core Values

Customer Commitment

We build lasting relationships by understanding customer needs and consistently delivering quality and value.

Sustainability & Responsibility

We act with respect for the planet and society, embedding sustainable practices into our business decisions.

People & Growth

We support, respect, and empower our employees, knowing that their success, well-being, and innovation drive our collective achievements.

Integrity & Transparency

We uphold the highest ethical standards, fostering trust through honesty, fairness and accountability



Specialization

Spectro delivers integrated MEP solutions across mechanical, electrical and plumbing we provide end to end services for diverse sectors including:

- **Commercial**
- **Hospitality**
- **Mission-critical and Data Centres**

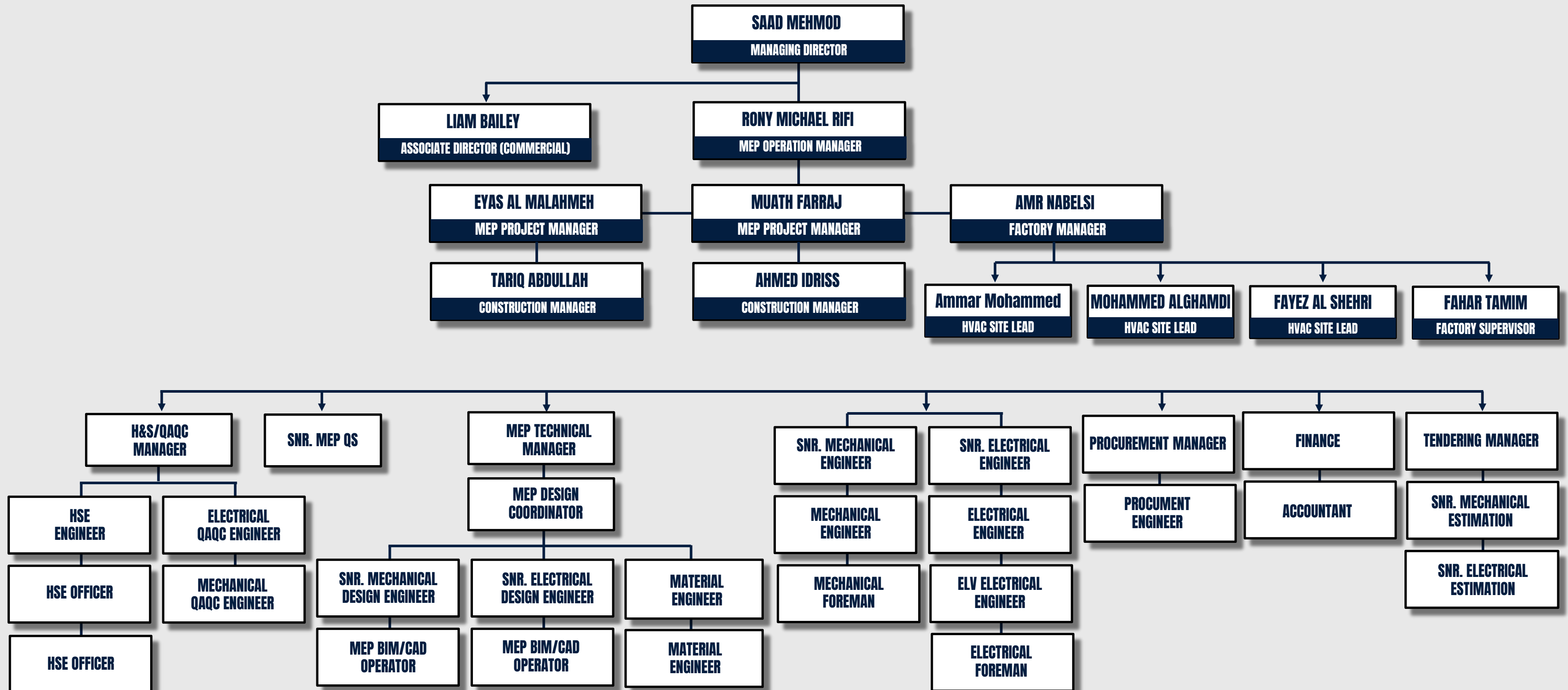
Our services are engineered to meet the highest standards of performance, safety, and energy efficiency, serving commercial, hospitality, and mission-critical applications.

Our Strength

- **In-house Manufacturing** capabilities under SPECTRO HVAC Factory.
- **In-house Technical team** with strong technical, value engineering and BIM capabilities.
- **Strong Partnerships** with local and international MEP Designers.

Spectro in-house capabilities, reinforced by its integrated supply chain, provide a solid foundation for delivering consistent and dependable MEP solutions across the region

Our Team



Management & Labor Resources

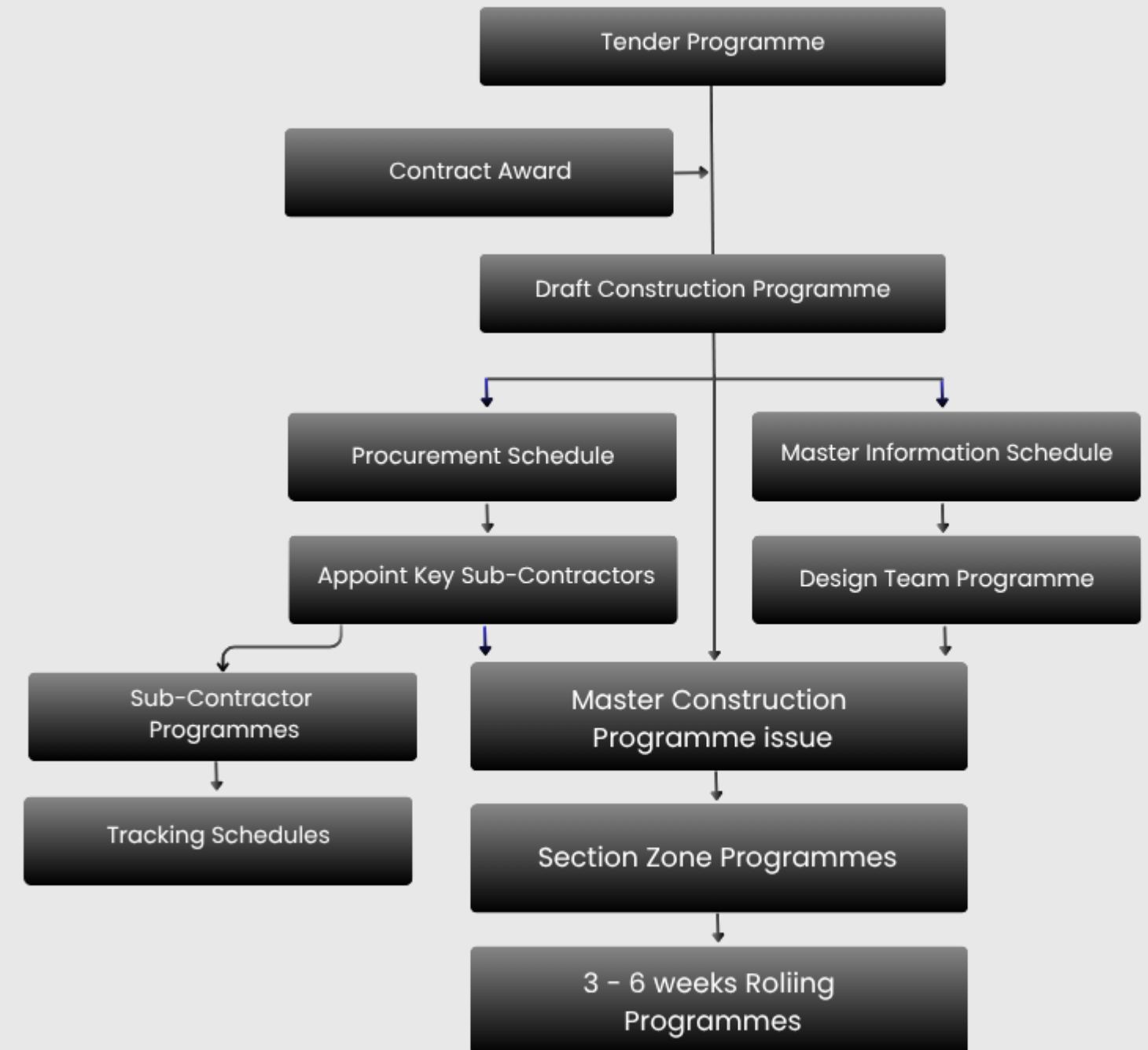
	Count
MEP Project Manager	3
Construction Manager	3
Administration	4
Site Mechanical Engineer	13
Site Electrical Engineer	8
MEP Skilled Labor	305

	Count
MEP Technical Manager	1
MEP Design Mechanical Engineer	4
MEP Design Electrical Engineer	2
CAD Operator Electrical	4
CAD Operator Mechanical	4



Quality Control

- Master Programme Prepared prior to the Commencement of Works
- 3 month and 4 week look ahead progress reports
- Detailed Design Programme Established – All Disciplines
- Program Fully Integrated with Specialist Subcontractors
- Master Procurement Schedule – Both Subcontractors & Suppliers
- Tracking Schedules, Phasing Diagrams, 3D modelling
- Regular Programme Review Workshops
- Continuous Progress Monitoring – Progressing Against Baseline
- Independent Monthly Audits followed by Team Review
- Integrated QA/QC system for both factory production and site execution.





- **Management System Certified to ISO 45001 / ISO 14001**
- **Our key drivers**
 - Zero accidents/incidents, Create a Safety Culture throughout
 - Full commitment from the board of directors & management team
 - Promoting behavioral change at all levels
- **Health & safety plan**
 - Project Specific, including preliminary information, implementation, monitoring and control measures
 - Identification of Significant Risks, Detail of Lock out/Tag Out System
 - Site PPE Requirements, First Aid Facilities, Circulated and communicated to all parties and reviewed periodically
- **Management Plans**
 - Site Mobilization, General Logistics, Worker Welfare Facilities and Maintenance, Traffic Management and Segregation.
 - Horizontal and Vertical Movement, lifting plan process/requirements
- **Pre-construction meetings and Pre-qualification of subcontractors.**





Our Services

MEP Turnkey

SPECTRO delivers fully integrated contracting and maintenance solutions, certified by the Civil Defense Authority and compliant with international standards, ensuring safety, reliability, and quality.

Mechanical Systems

Plumbing Systems

Electrical Systems

Low Current Systems



MEP Contracting

Design, supply, installation, and Testing & Commissioning of:

HVAC Systems

Plumbing and Mechanical Networks

Electrical Systems

Low Current and Control Systems

ICT & AV System

Fire Life Safety Systems



HVAC SOLUTIONS

- Design, Supply and Installation of HVAC Systems
- Testing, Adjusting, and Balancing (TAB) for Air & Water Systems
- Enclosure envelope leak testing and rectification
- Indoor Air Quality (IAQ) testing
- Duct cleaning services



Value-added Services

VALUE-ADDED SERVICES

Our Factory



Production



Automation



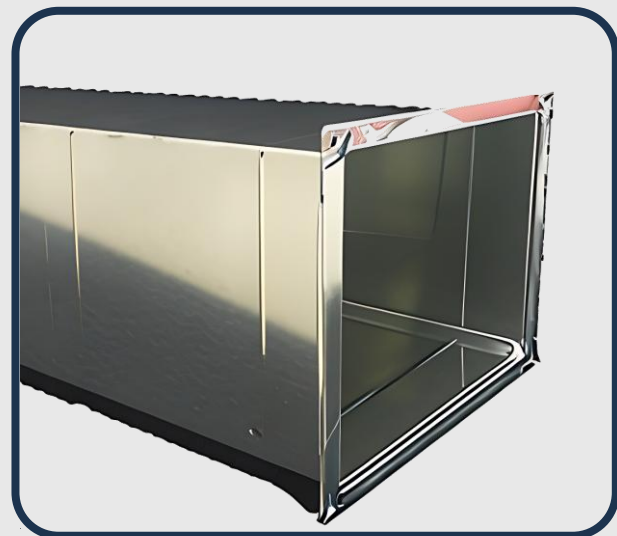
On time Delivery

Our Products

Duct Works

Our ductwork solutions are fabricated using automated machinery and adhere to international standards

- **Pre-Insulated Duct**
- **GI Rectangular Duct**
- **Spiral Duct**
- **Fire Rated Duct (Coated/Non-Coated)**



Dampers and Accessories

Our range of Dampers and Accessories are designed and manufactured to meet international standards.

- **Fire Damper**
- **Combine Fire and Smoke**
- **Non-Return Damper**
- **Pressure Relief Damper**



Sound Attenuators and Louvers

Our Sound Attenuators and Louvers are engineered to enhance acoustic performance and airflow efficiency.

- **Rectangular Attenuator**
- **Circular Attenuator**
- **Sand Trap Louver**
- **Gravity Louvers**



Air Outlets

Our range of Air Outlets ensures efficient air distribution, comfort, and aesthetic integration

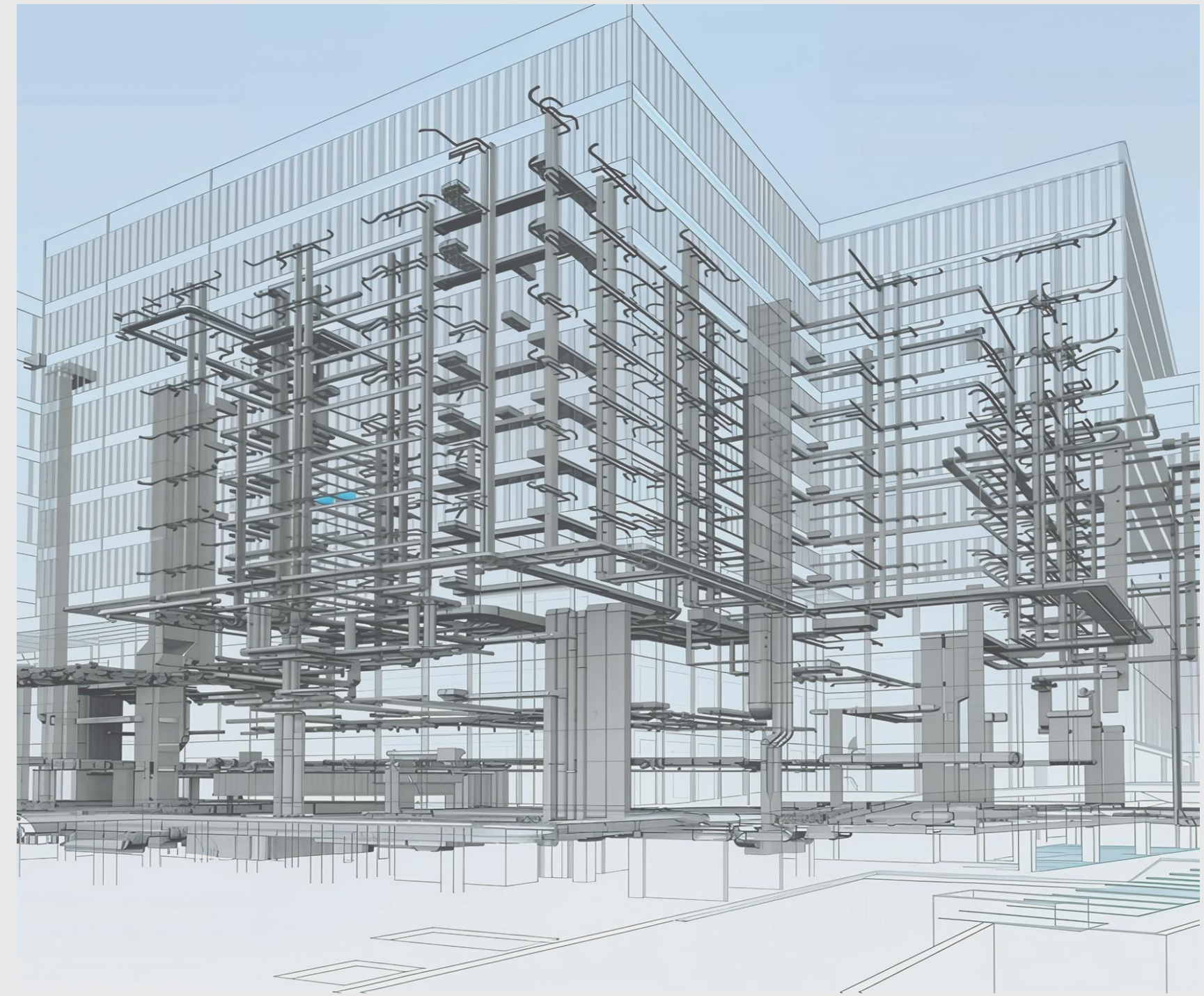
- **Bar Grille**
- **Round Ceiling Diffuser**
- **Celling Diffuser**
- **Flow Bar Diffuser**





Fast-Track Construction Using BIM

- Pre-fabrication off site and review of potential modular construction
- Abortive work, reduced amount of re-work on site
- Time and money saved through improved productivity on Site
- Information sharing, collaborative process
- Better construction planning and quicker decision making
- Fewer and more specific RFI's
- Greatly reduced project risk & waste
- Preventative approach, better pre-construction coordination
- Improved quality of construction documentation
- Accurate as-built and models
- Aids additional and future design

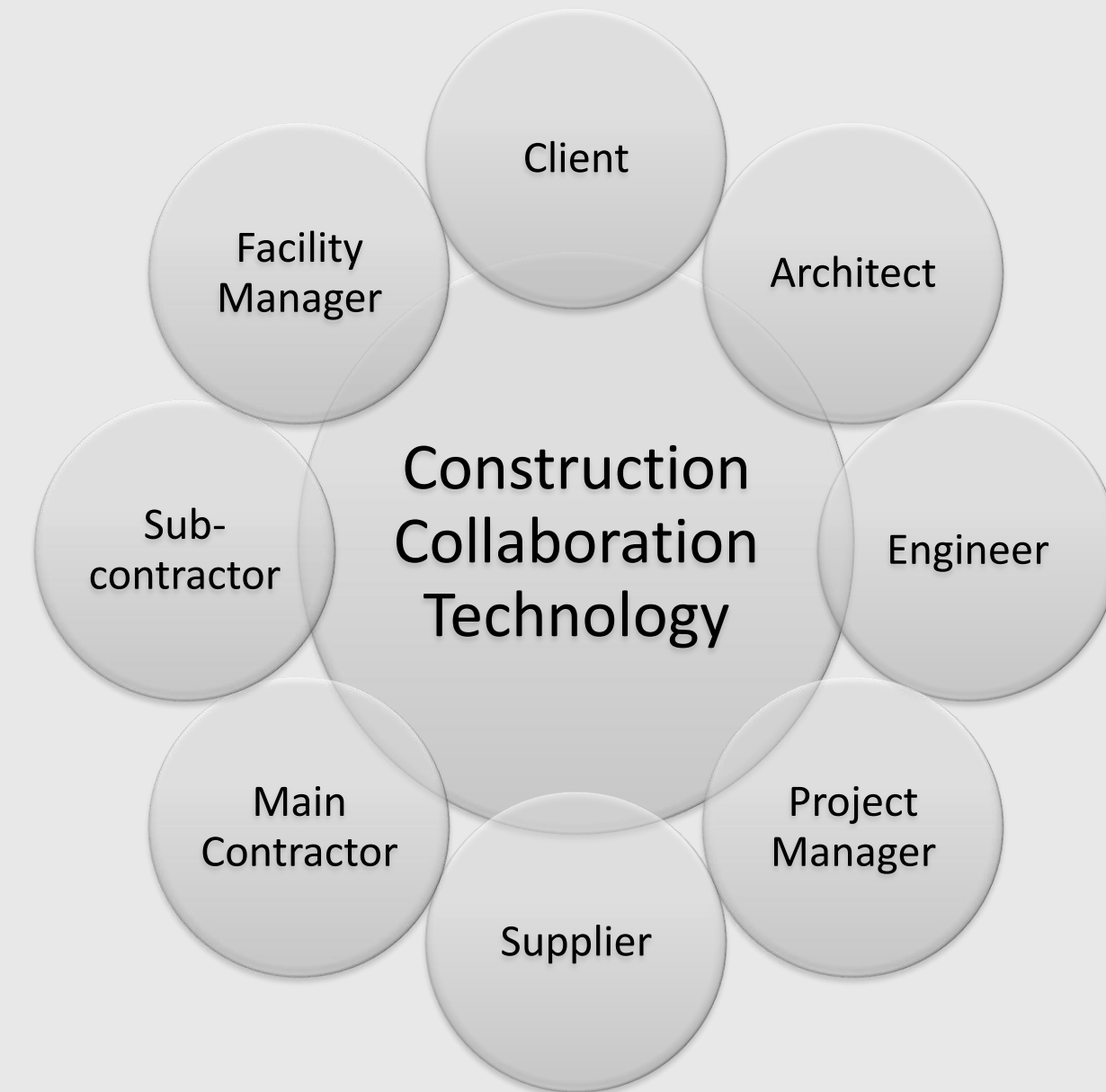
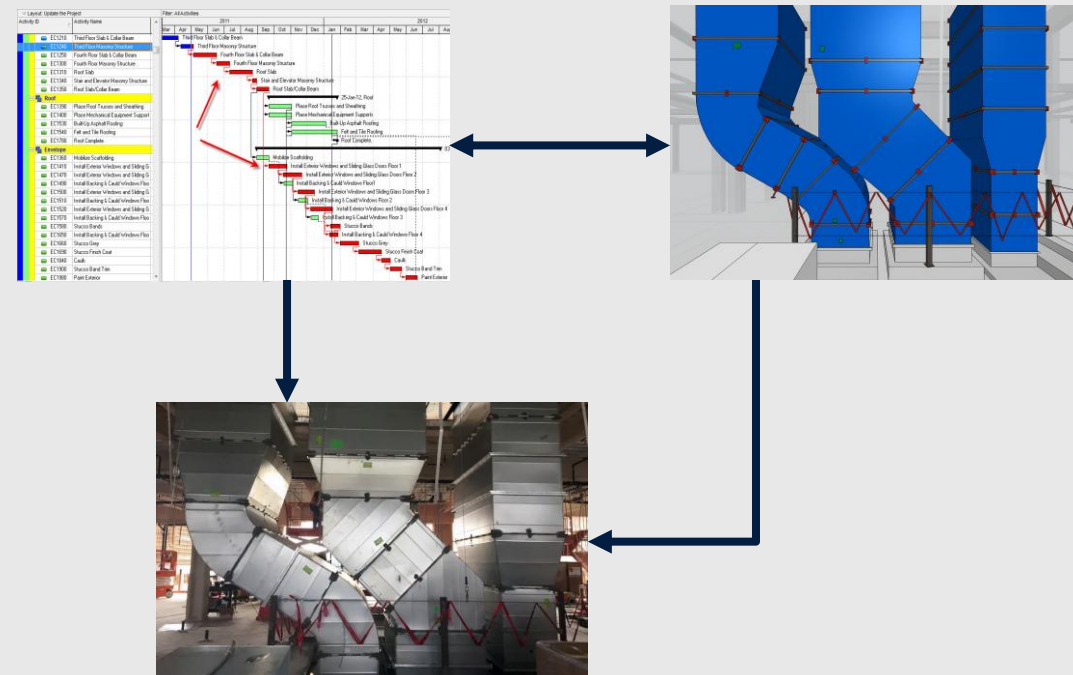




Collaboration Tools – BIM 4D, 5D

3D Model of the building integrated with the construction schedule

- Allows the project team to “Build the Project Twice” (Virtually and On Site).
- Learn how ongoing changes to the design and performance of the project can be tracked throughout the delivery process, clash detection and visualization.
- Enhance Communication – Planners can visually communicate the planned construction process to all project stakeholders.





Our Projects

Commercial Projects



OUR PROJECTS



PIF TOWER OFFICE FIT-WORKS

KAFD, Riyadh, KSA

Client: King Abdullah Financial District Development & Management Company

Location: Riyadh, KSA

Designer: Gensler & Parsons

Programme: 14 Months

Floor Area: 25,000 M²

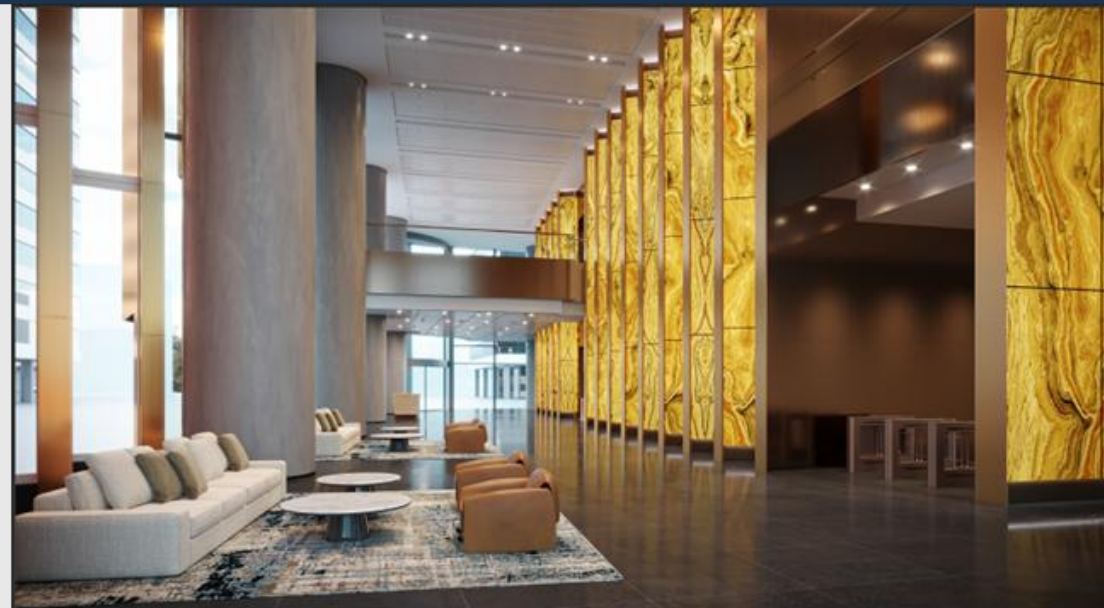
Project Description:

The Scope of Works of complete (MEP) systems for the interior fitout works to eighteen (18) floors and the relevant areas of basement LB1 of the "PIF Tower", Parcel 1.16, at the King Abdullah Financial District, Riyadh

Works include design and build of new offices including, Demolition works, Temporary offices, (Mechanical, Electrical, Low Voltage, Plumbing, Testing and Commissioning of all Fit-Out building systems etc



OUR PROJECTS



RIYAD BANK BRONZE TOWER OFFICE FIT- WORKS

KAFD, Riyadh, KSA

Client: Riyadh Bank

Location: Parcel 1.14, KAFD, Riyadh, KSA

Designer: Gensler & KEO

Programme: 18 Months

Floor Area: 79,000 M²

Project Description:

The Scope of Works of complete (MEP) systems for the interior fit-out of forty-four (44) floors at the "Riyad Bank Tower," Parcel 1.14, King Abdullah Financial District, Riyadh. The works include the supply, installation, testing, and commissioning of all MEP services covering HVAC systems, power distribution, lighting, low current systems, fire alarm and fire fighting networks, plumbing and drainage, as well as necessary remedial modifications to existing installations, and full coordination with the fit-out requirements to ensure that all systems are delivered in compliance with project specifications, local authority regulations, and international standards.

OUR PROJECTS

SAMA HQ -1 RENOVATION WORKS

Riyadh, KSA

Client: Saudi Central Bank (SAMA)

Location: Riyadh, KSA

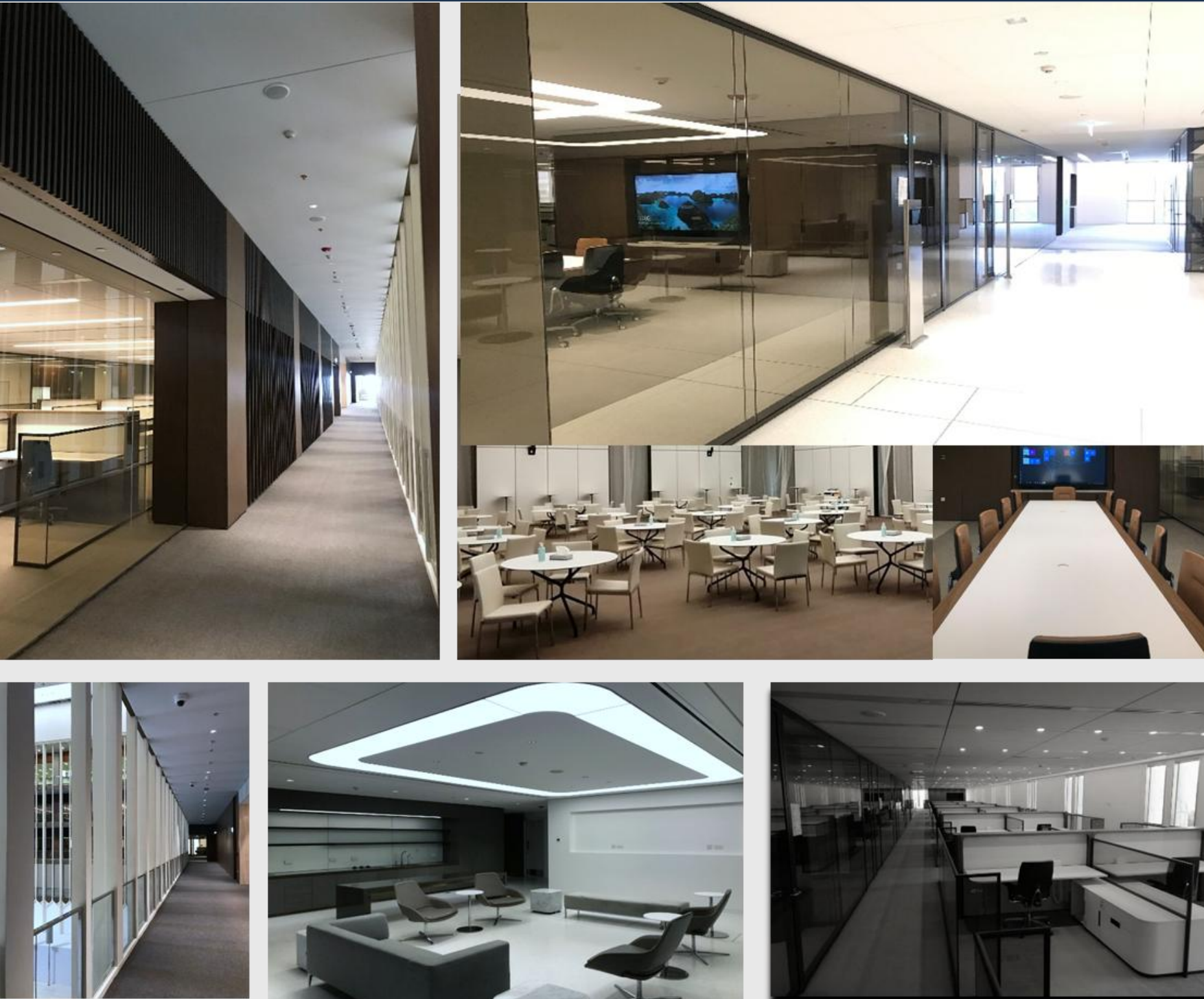
Designer: SOM , USA

Programme: 24 Months

Floor Area: 58,000 M²

Project Description:

The SAMA HQ 1 project consists of 6 existing interior floors above grade and 2 basement floors complete with a large 6 story central landscaped atrium which will be demolished and re-fitted with new MEP systems. The project will be phased to allow the building to be partly occupied during construction



OUR PROJECTS



SRMG HQ OFFICE FIT-WORKS *KAFD, Riyadh, KSA*

Client: Saudi Research & Media Group (SRMG)

Location: Riyadh, KSA

Designer: Lamar Johnson & PMK

Programme: 14 Months

Floor Area: 8,000 M²



Project Description:

The Scope of Works is for the completion Design & build services of the SRMG New Corporate HQ office for a floor space of 8,000m² square meters across 4 floors in Parcel 4.11, at the King Abdullah Financial District, Riyadh, Kingdom of Saudi Arabia.

Works include design and build of new offices including, Demolition works, Temporary offices, Mechanical, Electrical, Plumbing, Testing and Commissioning of all Fit-Out building systems etc.



OUR PROJECTS



PRICEWATERHOUSE COOPERS

Riyadh, KSA

Client: Pricewaterhouse Coopers (PWC)

Location: KAFD & Kingdom Centre Designer: Perkin + Will, Bluehouse & Absal Paul Design & Build

Value: Confidential

Programme: 7 Months Floor Area: 7,500 m²

Project Description:

The project consist of the high-end fit-out of 7,500 m² of office space for Pricewaterhouse Coopers. The fast-track fit-out involves MEP and partitions, finishes to toilet area and the fitted furniture and fittings.



OUR PROJECTS



HALLIBURTON R&D Centre & SAIHAT Expansion *Dammam, Saudi*

Client: Halliburton Energy Services, KSA

Location: Dharan & Al Qatif, KSA

Consultant : Gensler and Buro Happold

Programme: 12 Months

Floor Area: 16,000 m²



Project Description:

This project entailed the full construction and commissioning of a high specification research and Development facility for Halliburton Saudi Arabia. The construction and fit-out of 8,000 m² Research Laboratory located in Dhahran Techno Valley. The project consisted of the construction of a two story concrete frame including of MEP, laboratory furniture and high end fit-out to conference and training areas.

New development within the existing Halliburton Saihat Base. The project consisted of 343 bedroom personnel accommodation in 2 large residential blocks with recreation and dining facilities for residents. The scope of works also included centralized MEP area, warehousing, workshops, perimeter blast wall and associated external works of 15,000 m²

OUR PROJECTS



SAUDI INTERNATIONAL PETROL CHEMICAL COMPANY (SIPCHEM)

Dhahran, Al Khobar, Saudi Arabia

Client: Saudi International Petrol Chemical Company (SIPCHEM)

Location: Dhahran Techno Valley, Al Khobar, Saudi Arabia

Project Team: Absal Paul Design Build Value: Confidential

Programme: 11 Months Floor Area: 14,000 m²

Project Description:

This project entailed the full construction and commissioning of a high specification research and development facility for Sipchem incorporating research laboratories, offices, auditorium, manufacturing area and recreation spaces. The scope included full MEP design and construction,



OUR PROJECTS

TAQA Innovation Centre

Dhahran Techno Valley Kingdom of Saudi Arabia

Client: The Industrialization & Energy Services Company

Location: Dhahran Saudi Arabia Designer: Gulf Consultant Architects

Floor Area : 7,000m²

Time: 13 Months

Project Description:

New construction of Research and development center for TAQA at Dhahran Techno Valley. The project consists of complete MEP services with Testing and Commissioning.



OUR PROJECTS



NESR Research & Development Facility *Dhahran Techno Valley , Kingdom of Saudi Arabia*

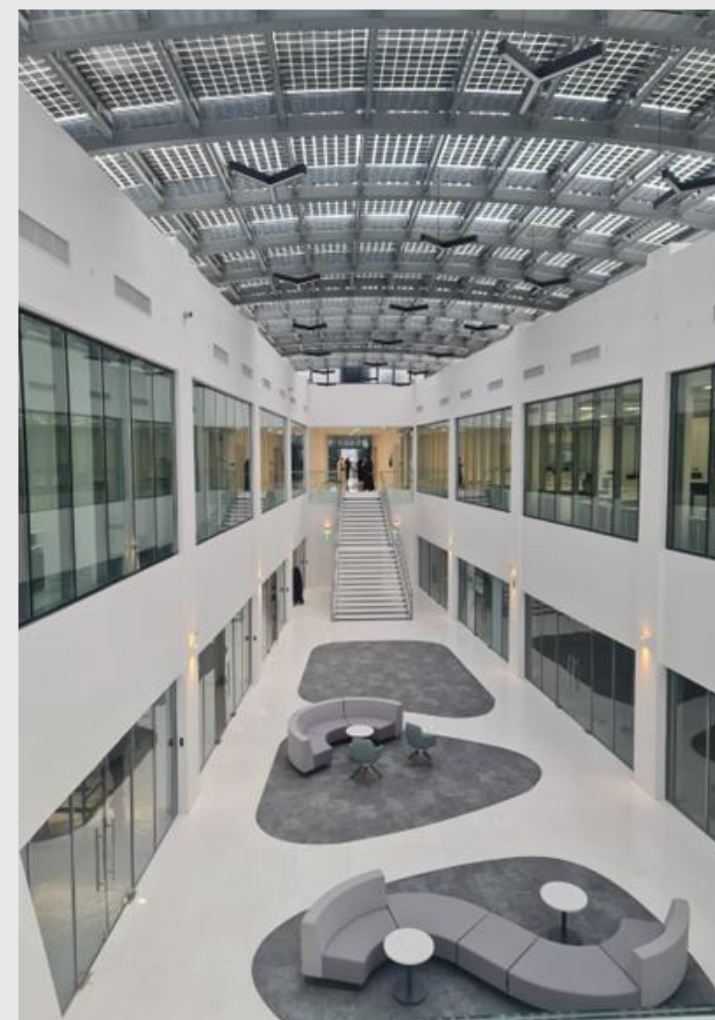
Client: National Energy Services Location: Daharan Saudi Arabia Designer: Tariq Al Haji Architects

Floor Area : 4,000m²

Time: 15 Months

Project Description:

New construction of Research and development center for National Petroleum corporation at Dhahran Techno Valley. The project consists of complete MEP services with Testing and Commissioning.



Hospitality



OUR PROJECTS



FOUR SEASONS HOTEL- I Kingdom Tower *Riyadh, Kingdom of Saudi Arabia*

Client: Four Seasons Hotel

Location: Riyadh

Designer: HBA Design

Floor Area : 25,000m²

Time: 12 Months

Project Description:

Appointed as a main contractor for the complete renovation works of Four-Season Hotel 274 rooms in Kingdom Tower. The project consists of complete MEP services with Testing and Commissioning.

Data Center



OUR PROJECTS



DXB 061 HIGH-CAPACITY DATA CENTRE, ABU DHABI UAE

Client: Confidential

Location: Abu Dhabi, UAE

Designer: Aecom/RED Eng

Programme: 52 weeks

Floor Area: 10,000 m²

Power: 32 MW

Project Description:

Fast track construction of a high capacity Data Centre for a confidential Client at Abu Dhabi, UAE

Project consist of bored concrete piles, structural steel frame, all MEP Systems (MV, LV, UPS Generators, Chilled Water Systems, BMS, EPMS & Fire Protection Systems) and integration, commissioning and validation of all systems. Multiple, active and independent sources of Power and Cooling resources.



OUR PROJECTS



Bah 054 High Capacity Data Centre - Zallaq *Bahrain*

Client: Confidential

Location: Zallaq, Bahrain

Designer: Aecom/RED Eng

Programme: 55 weeks

Floor Area: 11,000 m²

Power: 25 MW

Project Description:

Fast track construction of a high capacity Data Centre for a confidential Client at Zallaq, Bahrain.

Project consist of bored concrete piles, Structural Steel frame, all MEP Systems (MV, LV, UPS Generators, Chilled Water Systems, BMS, EPMS & Fire Protection Systems, 42 AHU's and 15 Computer Room Air Handlers (CRAH). and integration, commissioning and validation of all systems. Multiple, active and independent sources of Power and Cooling resources. All systems were commissioned from Level 1 – 5 to IST.



OUR VALUED CLIENTS



OUR PARTNERS



Ongoing MoU with KIMMCO, in partnership with Saint-Gobain, manufacturers of Climaver — an innovative, high-performance pre-insulated duct system designed for energy efficiency, fast installation, and acoustic performance.

This collaboration provides priority access to sustainable and innovative materials and supports efficient project delivery in line with modern building standards.



Ongoing MoU with Flowtech, our OEM for all duct accessories and air outlets, and a regional leader in HVAC air distribution systems.

This partnership ensures access to reliable, performance-tested components, streamlined supply for ongoing projects, and improved cost and lead-time efficiency.

CERTIFICATION & ACCREDITATION

Our systems are certified to International Standards:

ISO 45001:2018

QA Certification

Certificate of Registration

Absal Paul Contracting Company Ltd.

P.O. Box 4864, Prince Muhammed Ibn Saad Ibn Abdulaziz Road, Al Aqeeq Road, Riyadh 13515-2814, Kingdom of Saudi Arabia

IN REGARD TO
ISO 45001:2018
Occupational Health & Safety Management Systems

For the following scope of activities:
Implementation of Construction Contracts, General Construction, Infrastructure, Water Supply and Drainage Work Installation, Demolition Works, Maintenance, Construction of Roads, Electrical Works, Mechanical Works, Painting & Decoration Works and Landscaping.

INITIAL ISSUE DATE	22 November 2023
LATEST CERTIFICATION DATE	22 November 2023
CERTIFICATE EXPIRY DATE	22 November 2026
SURVEILLANCE AUDIT DUE BY	22 November 2024
CERTIFICATE STATUS	Full

Certificate No.: 14140817
Authorized Signature For QA Certification

GA GLOBAL ACCREDITATION
IRQAO
ASCB

To check this certificate status visit: www.irqao.com

Certified that this is an accredited certificate authorized for issue by QA Certification against defined criteria and in cognizance of ISO 17021:2015 Conformity Assessment - Requirements for bodies providing audit and certification of management systems. This certificate and its accredited status is only valid when confirmed by the register listed in the International Register of Quality Assessed Organisations: www.irqao.com

This certificate is the property of QA Certification.

الرقم ١٦١٧٦
التاريخ ١٤٣٧/٠٣/٠٤
رقم الملف ١٠٤٧٧

شهادة تصنيف المقاولين

وزارة الشؤون البلدية والقروية
وكالة الوزارة لشؤون تصنيف المقاولين

رقم ١٩٠١٠

اسم المقاول : شركة اسبل جون بول للمقاولات الجنسية : سعودية
نوع الملكية : شركة ذات مسؤولية محدودة مختلطة سعودية / ايرلندية

رقم السجل التجاري : ١٠١٠٣٤٦٥٠٨
العنوان : ص. ب ٤٨٦٤ الرياض ١١٤١٢

مجال التصنيف

الدرجة الأولى

مصدره : الرياض
هاتف : ٠١١٢٠٠٨٨٥٥

تاريخه : ١٤٣٣/٠٩/١٣
فاكس : ٠١١٢٠٠٨٨٢٢

عن وكيل الوزارة لشؤون تصنيف المقاولين
عبدالله بن محمد المطيري
محمد بن عبدالمجيد بن منصور

تنتهي صلاحية هذه الشهادة بتاريخ : ١٤٤١/٠٣/٠٤ هـ

* الشهادة لا يند بها (إلا إذا قدم الشريك الأجنبي عند التقييم أي عطاء أو عرض من الشركة ضماناً بوفائها بالبرنامج) وذلك حسب ما نصت عليه المادة الخامسة عشرة من نظام تصنيف المقاولين

ملاحظة هامة جداً : يجب مطابقة الصور على الأصل في كل حالة كل كسب أو تغيير في هذه الشهادة يُلغىها.

TÜV SAARLAND

CERTIFICATE

The quality management system of

ABSAL PAUL

Absal John Paul Contracting Company Ltd.
P.O. Box 4864, Prince Muhammed Bin Saad Ibn Abdulaziz Road, Al Aqeeq (Dist) | Riyadh 13515-2814 | Saudi Arabia

has been assessed and certified as meeting the requirements of:

ISO 9001:2015

for the following activities:
Planning and implementation of construction contracts and turn key projects

This certificate is valid from 16.04.2024 until 12.04.2027
Issued: 16.04.2024
Certificate No. **DA01334-EN**

Dipl. Wirtsch.-Ing. (FH) Thorsten Greiner, Managing Director
TÜV SAARLAND Certification GmbH
Am TÜV 1 | 66280 Sulzbach/Saar | Germany
T +49 (0) 68 97 506-0 | cert@tuv-saar.com

IAF **DAKKS**

Page 1 of 1

FLOW THROUGH INNOVATION

SPECTRO is committed to provide innovative and sustainable MEP solutions with the agility and efficiency needed to support the ambitious pace of Saudi Vision 2030



Contact Us



WWW.SPECTROINTL.COM



mepinfo@spectrointl.com